

Design and Control of A DC Motor Using Fuzzy Logic Controller

PROF. SAGRAM KESHARI SAHOO¹ , PROF. MILAN KUMAR SAHA²

¹sangramkesharisahoo@rec.ac.in , ²milankumarsaha@rec.ac.in

^{1,2} DEPT. OF ELECTRICAL ENGINEERING

^{1,2} RAAJDHANI ENGINEERING COLLEGE

ABSTRACT

The importance of a fuzzy approach over a traditional PID method is suggested in this research. The controller's design is informed by the system's expert knowledge. Two separate types of controllers are used to obtain the system's output response: PID and fuzzy logic controllers. In this research, PID fuzzy controllers are used to verify the DC motor's performance. Ultimately, the outcome demonstrates that the fuzzy technique has minimum transient, steady state, and overshoot parameters, demonstrating its greater efficacy and efficiency over traditional PID.

Keywords: DC Motor, Fuzzy Control, & PID

1. INTRODUCTION

The creation of high-performance motor drives is crucial for industrial and other applications like robots, electric trains, and steel rolling mills. In order to accomplish a task, a high performance motor drive system often has to have good dynamic speed command tracking and load regulating responsiveness. DC drives, because of their simplicity, ease of application, high reliabilities, flexibilities and favorable cost have long been a backbone of industrial applications, robot manipulators and home appliances where speed and position control of motor are required. DC drives are less complex with a single power conversion from AC to DC. Again the speed torque characteristics of DC motors are much more superior to that of AC motors. A DC motors provide excellent control of speed for acceleration and deceleration. DC drives are normally less expensive for most horsepower ratings. DC motors have a long tradition of use as adjustable speed machines and a wide range of options have evolved for this purpose. In these applications, the motor should be precisely controlled to give the desired performance. The controllers of the speed that are conceived for goal to control the speed of DC motor to execute one variety of tasks, is of several conventional and numeric controller types, the controllers can be: proportional integral (PI), proportional integral derivative (PID) Fuzzy Logic Controller (FLC) or the combination between them The proportional – integral – derivative (PID) controller operates the majority of the control system in the world. It has been reported that more than 95% of the controllers in the

industrial process control applications are of PID type as no other controller match the simplicity, clear functionality, applicability and ease of use offered by the PID controller [3], [4]. PID controllers provide robust and reliable performance for most systems if the PID parameters are tuned properly.

II. SYSTEM MODELING OF SEPARATELY EXCITED DC MOTOR:

The equivalent circuit for a separately excited dc motor is shown in Figure 1. When a separately excited motor is excited by a field current i_f and armature current i_a flows in the armature circuit, the motor develops a back emf and a torque to balance the load torque at a particular speed. The field current of a separately excited motor is independent of the armature current i_a and any change in the armature current has no effect on the field current. The field current is normally much less than the armature current.

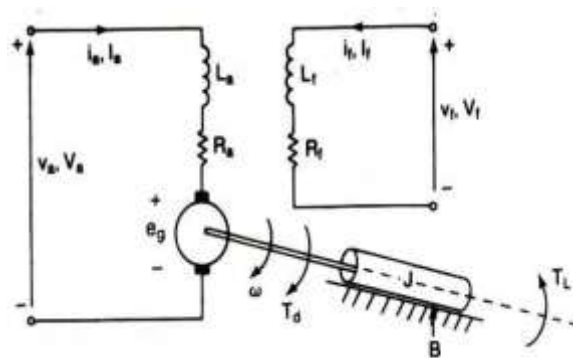


Figure 1: DC Motor Equivalent Circuit

III. MODELING OF SEPARATELY EXCITED DC MOTOR:

From figure 1:

The armature voltage equation is given by:

$$V_a = E_b + I_a R_a + L_a (dI_a/dt)$$

Now the torque balance equation will be given by:

$$T_m = J_m(d\omega/dt) + B_m(\omega) + T_L$$

Where:

T_L is load torque in Nm.

Friction in rotor of motor is very small (can be neglected), so $B_m = 0$ Therefore, new torque balance equation will be given by:

$$T_m = J_m(d\omega/dt) + T_L \text{-----(i)}$$

Taking field flux as Φ and Back EMF Constant as K . Equation for back emf of motor will be:

$$E_b = K \Phi \omega \text{-----(ii)}$$

$$\text{Also, } T_m = K \Phi I_a \text{ -----(iii)}$$

Taking laplace transform of the motor's armature voltage equation we get

$$I_a(S) = (V_a - E_b) / (R_a + L_a S)$$

Now, taking equation (ii) into consideration, we have:

$$I_a(s) = (V_a - K\Phi\omega) / R_a (1 + L_a S/R_a)$$

$$\text{And } \omega(s) = (T_m - T_L) / J_s = (K\Phi I_a - T_L) / J_m S$$

$$\text{(Armature Time Constant) } T_a = L_a/R_a$$

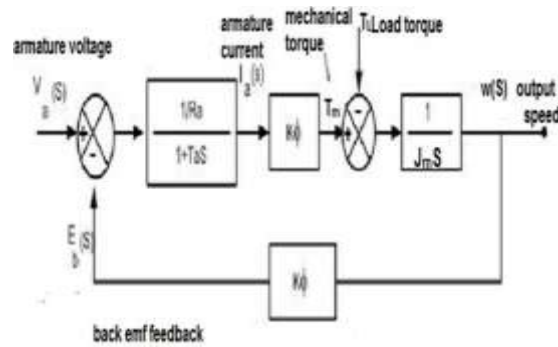


Figure 2: DC Motor Equivalent Circuit

After simplifying the above motor model, the overall transfer function will be

$$\omega(s) / V_a(s) = [K\Phi / R_a] / J_m S(1 + T_a S) / [1 + (K^2 \Phi^2 / R_a) / J_m S(1 + T_a S)]$$

PI Controller

A PI Controller (proportional-integral controller) is a combination of proportional and integral controller which is used for eliminating steady state error and peak overshoots¹⁰⁻¹¹. The absence of derivative controller shows more stability under noise conditions. This is because the derivative controller is more sensitive under high frequency systems.

The general expression for PI controller is expressed as,

$$K_P \Delta + K_I \int \Delta dt$$

E. Fuzzy Logic Controller

In the previous section, control strategy based on PI controller is discussed. But in case of PI controller, it has high settling time and has large steady state error. In order to rectify this problem, this paper proposes the application of a fuzzy controller shown in Figure 3. Generally, the FLC¹² is one of the most important software based technique in adaptive methods.

As compared with previous controllers, the FLC has low settling time, low steady state errors. The operation of fuzzy controller can be explained in four steps ¹³.

1. Fuzzification
2. Membership function
3. Rule-base formation
4. Defuzzification

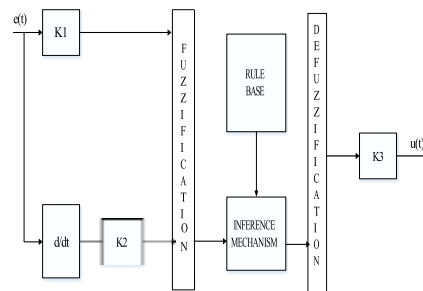


Figure 3: basic structure of fuzzy logic controller

In this paper, the membership function is considered as a type in triangular membership function and method for defuzzification is considered as centroid. The error which is obtained from the comparison of reference and actual values is given to fuzzy inference engine. The input variables such as error and error rate are expressed in terms of fuzzy set with the linguistic terms {el, em, eh} and Pin this type of mamdani fuzzy inference system the linguistic terms are expressed paper, two inputs and single output fuzzy inference system is considered. The second input is chosen as rate using triangular membership functions. In this of change of error. The number of linguistic variables for input and output is assumed as 3 The numbers of rules are formed as 9.



Figure 4: Rule-Base formation FIS system

IV. SIMULATION RESULTS

The results of the system with using different type of controllers are shown here. The responses of the system with several controllers such as PID, Fuzzy Logic Controller are being applied. In this section transfer function of the separately excited dc motor is used as a system and find out the response of the system applying the step function as an input.

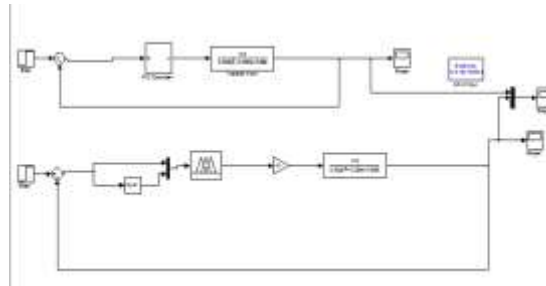


Figure 5: Simulation Diagram for DC Motor with PID & Fuzzy Controller



Figure 6: Simulation Result for Speed of DC Motor



Figure 7: Simulation Result for Speed with Fuzzycontroller



Time	PID	FUZZY
Peak Time	0.03	0.25
Rise Time	0.027	0.225

Delay Time	0.015	0.125
------------	-------	-------

Settling Time	4	0.44
Peak Overshoot	46	5

Table 1: Comparison of Time domain specifications Between PID & Fuzzy Controllers

VI.CONCLUSION

In this paper the speed of a DC motor is controlled using fuzzy logic and PID controller. The simulation results are obtained using MATLAB/SIMULINK. The Fuzzy response is compared with that of conventional PID controller. The results show that the overshoot, settling time, peak time and control performance has been improved greatly by using Fuzzy controller. The proposed Fuzzy controller has more advantages, such as higher flexibility, control, better dynamic and static performance compared with conventional controller.

REFERENCES

- [1.] Speed Control of Separately Excited Dc Motor Using Fuzzy Logic Controller, Rekha kushwah, , Sulochana Wadhvani,, International Journal of Engineering Trends and Technology (IJETT) - Volume4 Issue6- June 2013
- [2.] Manafeddin Namazov, "DC motor position control using fuzzy proportional-derivative controllers with different Defuzzification methods" An Official Journal of Turkish Fuzzy Systems Association Vol.1, No.1, pp. 36-54, 2010.
- [3.] Vikas S. Wadnerkar, Mithun M. Bhaskar, Tulasi Ram Das and A.D. Raj Kumar, "A New Fuzzy Logic based Modelling and Simulation of a Switched Reluctance Motor", Journal of Electrical Engineering & Technology Vol. 5, No. 2, pp. 276 - 281, 2010.
- [4.] Atul Kumar Dewangan, Sashai Shukla, Vinod Yadu "Speed Control of a Separately Excited DC Motor Using Fuzzy Logic Control Based on Matlab Simulation Program" International Journal of Scientific & Technology Research Volume 1, Issue 2, ISSN 2277-8616 pp. 52 – 54 ,March 2012
- [5.] Zadeh L. A., "Outline of a New Approach to the Analysis of Complex Systems and Decision Processes", IEEE Transactions Systems, Man and Cybernetics, SMC-3, 1973, pp. 28-44.
- [6.] Sulochana Wadhvani, Veena Verma, Rekha Kushwah, "Design and tuning of PID controller parameters based on fuzzy logic and genetic algorithm", Int. Conf. On soft computing, artificial intelligence, pattern recognition, biomedical engineering and associated technologies (SAPBEATS), Feb 23-24 ,2013", department of electrical engineering, MBM eng. College Jai Narain Vyas university, jodhpur.
- [7.] Nader Jamali Sufi Amlashi "Design and Implementation of Fuzzy Position Control System for Tracking Applications and Performance Comparison with Conventional PID" IAES International Journal of Artificial Intelligence (IJ-AI) Vol. 1, No. 1, March 2012, pp. 31 - 44 ISSN: 2252-8938.
- [8.] Zeyad Assi Obaid, Member, IAENG, Nasri Sulaiman, M. H. Marhaban And M. N. Hamidon, Member IAENG "Analysis and Performance Evaluation of PDlike Fuzzy Logic Controller Design Based on Matlab and FPGA" IAENG International Journal of Computer Science, 37:2, IJCS_37_2_04 (Advance online publication: 13 May 2010).
- [9.] Rekha Kushwah, Sulochana Wadhvani, "Fuzzy Logic based Tuning of PID Controller Parameters", National Conference on New Frontiers for Women in Science and Technology March 20- 21, 2013, Jiwaji University, Gwalior (M.P.).